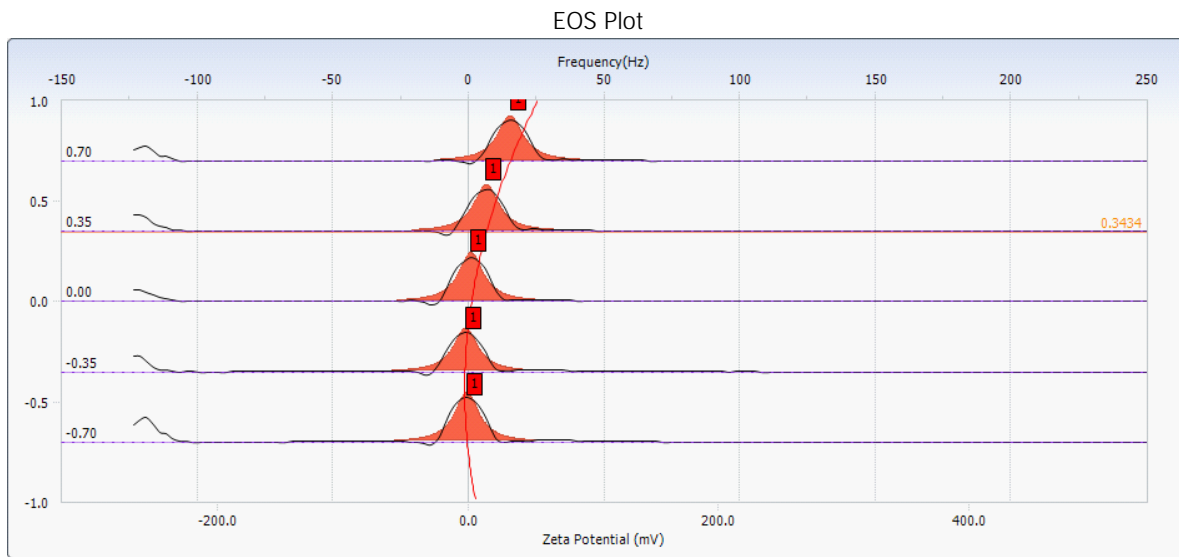


EOS Plot / Distribution Graph

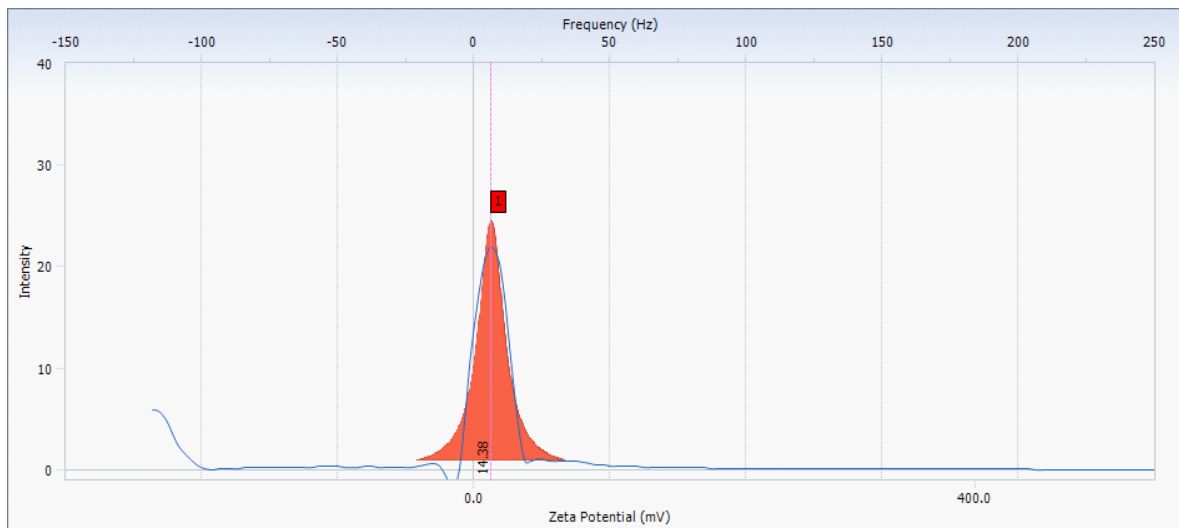
S/N : 601516

User : Common Group : ASIA Repetition : 1/1
 Date : 9/21/2018 File Name : Fe Np
 Time : 11:50:11 Sample Information : komercyjny 50%
 SOP Name : Simple Setting(Zeta)_0 Security : No Security

Version 7.100 / 4.01



Mobility Distribution



Measurement Results

Zeta Potential	: 14.38	(mV)	Doppler shift	: 6.64	(Hz)
Mobility	: 1.121e-004	(cm ² /Vs)	Base Frequency	: 123.5	(Hz)
Conductivity	: 0.0046	(mS/cm)	Conversion Equation	: Smoluchowski	
Zeta Potential of Cell			Diluent Properties		
Upper Surface	: -40.91	(mV)	Diluent Name	: WATER	
Lower Surface	: 8.13	(mV)	Temperature	: 25.0	(°C)
Cell Condition			Refractive Index	: 1.3328	
Cell Type	: Zeta Cell (Dispo)		Viscosity	: 0.8878	(cP)
Avg. Electric Field	: 12.32	(V/cm)	Dielectric Constant	: 78.3	
Avg. Current	: 0.00	(mA)			